



National Sanitation and Hygiene Monitoring in Kenya

Prepared by:
Emmah Mwende, NSE



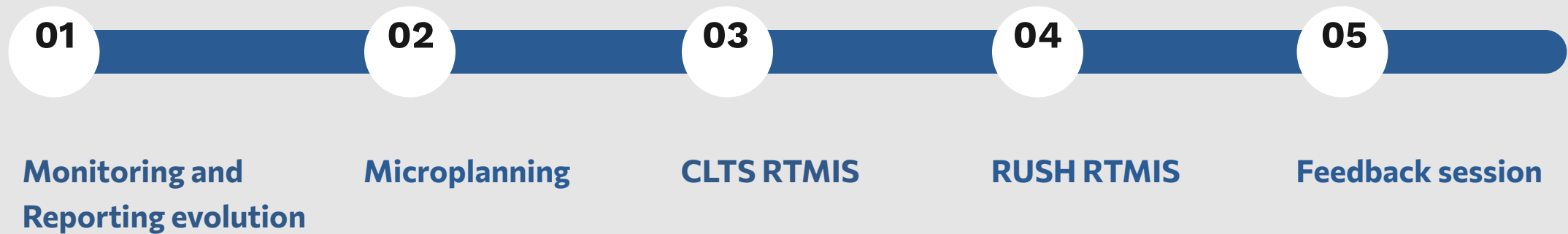
USAID
FROM THE AMERICAN PEOPLE



From
the People of Japan

unicef 
for every child

Table of CONTENTS



Monitoring and Reporting evolution

2011

Reporting

Adaption of
Micro Planning
tool by MOH
with support of

UNICEF

2015

CLTS RTMIS

National MoH through UNICEF
enhanced the capacity of RTMIS to
a robust and nationwide based
system

2011

ODF Rural Kenya Campaign

Kenya adopted CLTS
to achieve open
defecation free
Kenya

2013

1st Web based system

Monitoring system developed with
support from SNV to monitor ODF
Campaign

2021-to date

RUSH RTMIS

National MoH with
technical support from
UNICEF, financial support
from USAID developed
the RUSH RTMIS

Micro Planning (2011-2015)

- CLTS piloted in 2009.
- Ministry adopting the protocol to deliver sanitation.
- ODF campaign launched in 2011.
- National WASH Hub established and staffed. Plans to establish County Hubs.
- Development of the Microplanning tools with the excel reporting templates.
- Documents developed to support the campaign, ODF roadmap, and ODF Village micro plans.

Picture to be inserted here

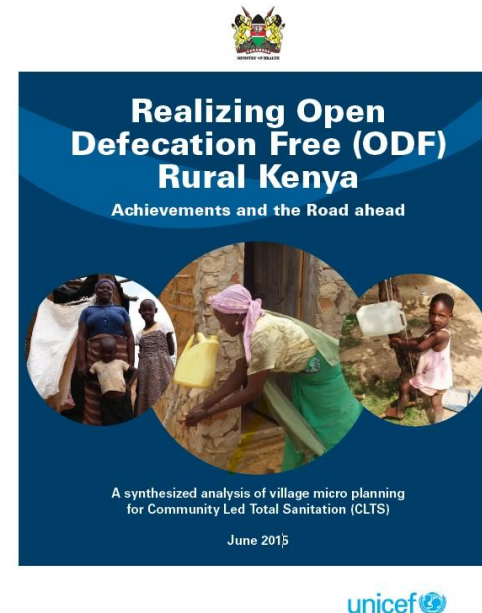


Table 1: Country Summary Journey to ODF ¹																																																																																																																																																																																																																																																																																																																																																																																																																																																																																																																																																																																																																																																																																																																																																																																																																																																																																																																																																																																																																																																																																																																																																																																																																																																																																																																																																																																																																																																																																																																																																																																																																																																																																																																																																																																																																																																																																																																																																																																																																																																																																																																																																																																																																																																																																																																																																																																																																																																																																																																																																																																																																																																																																																																																																																																																																																																																																																																																																																																																																																																																																																																																																																																																																																																																																																																																																																																																																													
Province or County	Total, All Years	2014/15				2015/16				2016/17				2017/18				2018/19				2019/20				2020/21				2021/22				2022/23				2023/24				2024/25				2025/26				2026/27				2027/28				2028/29				2029/30				2030/31				2031/32				2032/33				2033/34				2034/35				2035/36				2036/37				2037/38				2038/39				2039/40				2040/41				2041/42				2042/43				2043/44				2044/45				2045/46				2046/47				2047/48				2048/49				2049/50				2050/51				2051/52				2052/53				2053/54				2054/55				2055/56				2056/57				2057/58				2058/59				2059/60				2060/61				2061/62				2062/63				2063/64				2064/65				2065/66				2066/67				2067/68				2068/69				2069/70				2070/71				2071/72				2072/73				2073/74				2074/75				2075/76				2076/77				2077/78				2078/79				2079/80				2080/81				2081/82				2082/83				2083/84				2084/85				2085/86				2086/87				2087/88				2088/89				2089/90				2090/91				2091/92				2092/93				2093/94				2094/95				2095/96				2096/97				2097/98				2098/99				2099/00				2100/01				2101/02				2102/03				2103/04				2104/05				2105/06				2106/07				2107/08				2108/09				2109/10				2110/11				2111/12				2112/13				2113/14				2114/15				2115/16				2116/17				2117/18				2118/19				2119/20				2120/21				2121/22				2122/23				2123/24				2124/25				2125/26				2126/27				2127/28				2128/29				2129/30				2130/31				2131/32				2132/33				2133/34				2134/35				2135/36				2136/37				2137/38				2138/39				2139/40				2140/41				2141/42				2142/43				2143/44				2144/45				2145/46				2146/47				2147/48				2148/49				2149/50				2150/51				2151/52				2152/53				2153/54				2154/55				2155/56				2156/57				2157/58				2158/59				2159/60				2160/61				2161/62				2162/63				2163/64				2164/65				2165/66				2166/67				2167/68				2168/69				2169/70				2170/71				2171/72				2172/73				2173/74				2174/75				2175/76				2176/77				2177/78				2178/79				2179/80				2180/81				2181/82				2182/83				2183/84				2184/85				2185/86				2186/87				2187/88				2188/89				2189/90				2190/91				2191/92				2192/93				2193/94				2194/95				2195/96				2196/97				2197/98				2198/99				2199/00				2200/01				2201/02				2202/03				2203/04				2204/05				2205/06				2206/07				2207/08				2208/09				2209/10				2210/11				2211/12				2212/13				2213/14				2214/15				2215/16				2216/17				2217/18				2218/19				2219/20				2220/21				2221/22				2222/23				2223/24				2224/25				2225/26				2226/27				2227/28				2228/29				2229/30				2230/31				2231/32				2232/33				2233/34				2234/35				2235/36				2236/37				2237/38				2238/39				2239/40				2240/41				2241/42				2242/43				2243/44				2244/45				2245/46				2246/47				2247/48				2248/49				2249/50				2250/51				2251/52				2252/53				2253/54				2254/55				2255/56				2256/57				2257/58				2258/59				2259/60				2260/61				2261/62				2262/63				2263/64				2264/65				2265/66				2266/67				2267/68				2268/69				2269/70				2270/71				2271/72				2272/73				2273/74				2274/75				2275/76				2276/77				2277/78				2278/79				2279/80				2280/81				2281/82				2282/83				2283/84				2284/85				2285/86				2286/87				2287/88				2288/89				2289/90				2290/91				2291/92				2292/93				2293/94				2294/95				2295/96				2296/97				2297/98				2298/99				2299/00				2300/01				2301/02				2302/03				2303/04				2304/05				2305/06				2306/07				2307/08				2308/09				2309/10				2310/11				2311/12				2312/13				2313/14				2314/15				2315/16				2316/17				2317/18				2318/19				2319/20				2320/21				2321/22				2322/23				2323/24				2324/25				2325/26				2326/27				2327/28				2328/29				2329/30				2330/31				2331/32				2332/33				2333/34				2334/35				2335/36				2336/37				2337/38				2338/39				2339/40				2340/41				2341/42				2342/43				2343/44				2344/45				2345/46				2346/47				2347/48				2348/49				2349/50				2350/51				2351/52				2352/53				2353/54				2354/55				2355/56				2356/57				2357/58				2358/59				2359/60				2360/61				2361/62				2362/63				2363/64				2364/65				2365/66				2366/67				2367/68				2368/69				2369/70				2370/71				2371/72				2372/73				2373/74				2374/75				2375/76				2376/77				2377/78				2378/79				2379/80				2380/81				2381/82				2382/83				2383/84				2384/85				2385/86				2386/87				2387/88				2388/89				2389/90				2390/91				2391/92				2392/93				2393/94				2394/95				2395/96				2396/97				2397/98				2398/99				2399/00				2400/01				2401/02				2402/03				2403/04				2404/05				2405/06				2406/07				2407/08				2408/09				2409/10				2410/11				2411/12				2412/13				2413/14				2414/15				2415/16				2416/17				2417/18				2418/19				2419/20				2420/21				2421/22				2422/23				2423/24				2424/25				2425/26				2426/27				2427/28				2428/29				2429/30				2430/31				2431/32				2432/33				2433/34				2434/35				2435/36				2436/37				2437/38				2438/39				2439/40				2440/41				2441/42				2442/43				2443/44				2444/45				2445/46				2446/47				2447/48				2448/49				2449/50				2450/51				2451/52				2452/53				2453/54				2454/55				2455/56				2456/57				2457/58				2458/59				2459/60				2460/61				2461/62				2462/63				2463/64				2464/65				2465/66				2466/67				2467/68				2468/69				2469/70				2470/71				2471/72				2472/73				2473/74				2474/75				2475/76				2476/77				2477/78				2478/79				2479/80				2480/81				2481/82				2482/83				2483/84				2484/85				2485/86				2486/87				2487/88				2488/89				2489/90				2490/91				2491/92				2492/93				2493/94				2494/95				2495/96				2496/97				2497/98				2498/99				2499/00				2500/01				2501/02				2502/03				2503/04				2504/05				2505/06				2506/07				2507/08				2508/09				2509/10				2510/11				2511/12				2512/13				2513/14				2514/15				2515/16				2516/17				2517/18				2518/19				2519/20				2520/21				2521/22				2522/23				2523/24				2524/25				2525/26				2526/27				2527/28				2528/29				2529/30				2530/31				2531/32				2532/33				2533/34				2534/35				2535/36				2536/37				2537/38				2538/39				2539/40				2540/41				2541/42				2542/43				2543/44				2544/45				2545/46				2546/47				2547/48				2548/49				2549/50				2550/51				2551/52				2552/53				2553/54				2554/55				2555/56				2556/57				2557/58				2558/59				2559/60				2560/61				2561/62				2562/63				2563/64				2564/65				2565/66				2566/67				2567/68				2568/69				2569/70				2570/71				2571/72				2572/73				2573/74				2574/75				2575/76				2576/77				2577/78				2578/79				2579/80				2580/81				2581/82				2582/83				2583/84				2584/85				2585/86				2586/87				2587/88				2588/89				2589/90				2590/91				2591/92				2592/93				2593/94				2594/95				2595/96				2596/97				2597/98				2598/99				2599/00				2600/01				2601/02				2602/03				2603/04				2604/05				2605/06				2606/07				2607/08				2608/09				2609/10				2610/11				2611/12				2612/13				2613/14				2614/15				2615/16				2616/17				2617/18				2618/19				2619/20				2620/21				2621/22				2622/23				2623/24				2624/25				2625/26				2626/27				2627/28				2628/29				2629/30				2630/31				2631/32				2632/33				2633/34				2634/35				2635/36				2636/37				2637/38				2638/39				2639/40				2640/41				2641/42				2642/43				2643/44				2644/45				2645/46				2646/47				2647/48				2648/49				2649/50				2650/51				2651/52				2652/53				2653/54				2654/55				2655/56				2656/57				2657/58				2658/59				2659/60				2660/61				2661/62				2662/63				2663/64				2664/65				2665/66				2666/67				2667/68				2668/69				2669/70				2670/71				2671/72				2672/73				2673/74				2674/75				2675/76				2676/77				2677/78				2678/79				2679/80				2680/81				2681/82				2682/83				2683/84				2684/85				2685/86				2686/87				2687/88				2688/89				2689/90				2690/91				2691/92				2692/93				2693/94				2694/95				2695/96				2696/97				2697/98				2698/99				2699/00				2700/01				2701/02				2702/03				2703/04				2704/05				2705/06				2706/07				2707/08				2708/09				2709/10				2710/11				2711/12				2712/13				2713/14				2714/15				2715/16				2716/17				2717/18				2718/19				2719/20				2720/21				2721/22				2722/23				2723/24				2724/25				2725/26				2726/27				2727/28				2728/29				2729/30				2730/31				2731/32				2732/33				2733/34				2734/35				2735/36				2736/37				2737/38				2738/39				2739/40				2740/41				2741/42				2742/43				2743/44				2744/45				2745/46				2746/47				2747/48				2748/49				2749/50				2750/51				2751/52				2752/53				2753/54				2754/55				2755/56				2756/57				2757/58				2758/59				2759/60				2760/61				2761/62				2762/63				2763/64				2764/65				2765/66				2766/67				2767/68				2768/69				2769/70				2770/71				2771/72				2772/73				2773/74				2774/75				2775/76				2776/77				2777/78				2778/79				2779/80				2780/81				2781/82				2782/83				2783/84				2784/85				2785/86				2786/87				2787/88				2788/89				2789/90				2790/91				2791/92				2792/93				2793/94				2794/95				2795/96				2796/97				2797/98				2798/99				2799/00				2800/01				2801/02				2802/03				2803/04				2804/05				2805/06				2806/07				2807/08				2808/09				2809/10				2810/11				2811/12				2812/13				2813/14				2814/15				2815/16				2816/17				2817/18				2818/19				2819/20				2820/21				2821/22				2822/23				2823/24				2824/25				2825/26				2826/27				2827/28				2828/29				2829/30				2830/31				2831/32				2832/33				2833/34				2834/35				2835/36				2			

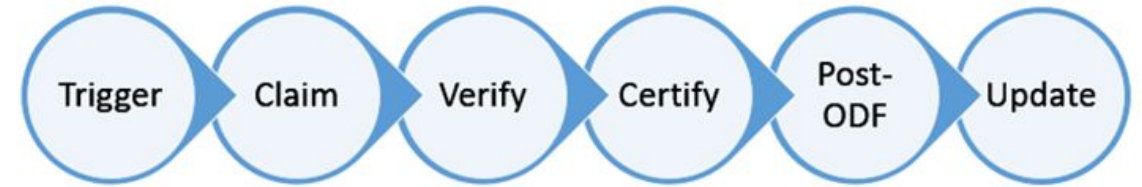
CLTS RTMIS OVERVIEW

- The current system CLTS Real-time monitoring and Information system focuses only on the elimination of open defecation, this includes the key stages in the CLTS approach including triggering, claims, verification and certification processes.

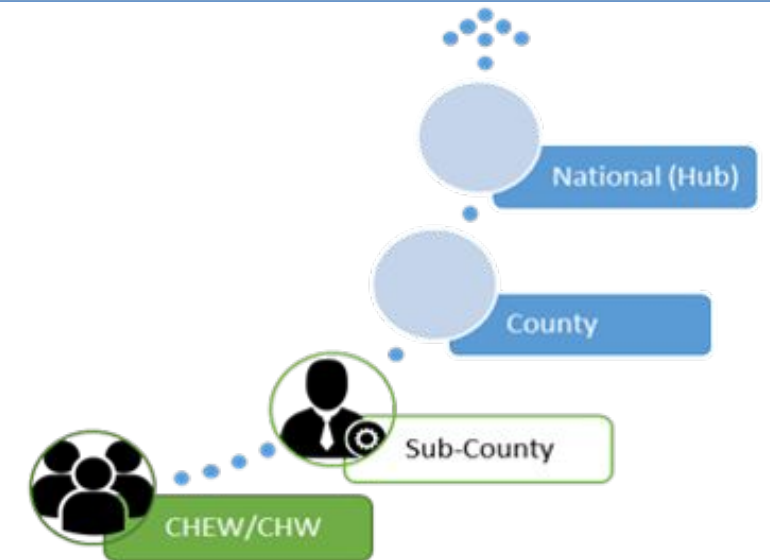
it does not capture

- post-ODF indicators,
- urban sanitation indicators, or indicators for school institutions and health institutions.
- The system does not also track enabling environment, demand, supply, capacity, and finances.
- This lack of data limits effective planning and the efficiency of service.

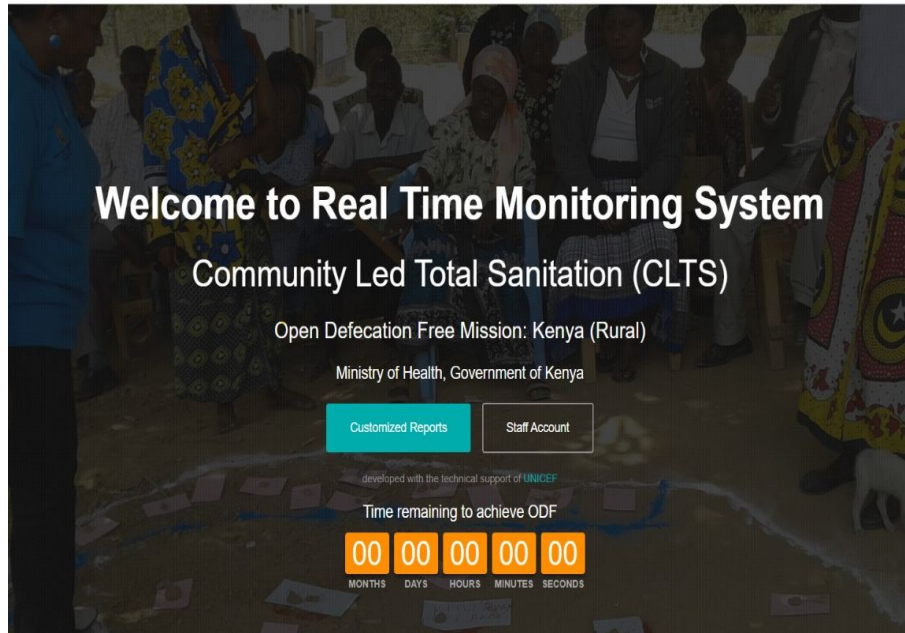
Flow



- A staff is assigned a trigger/claim/verify/certify task to enter data at village level. This data must be approved by a staff with approval rights.
- On approval, the system automatically generates task for the next stage and assigns it to the person who can execute that stage's tasks



Additionally, reporting is also done through the National and County sanitation profiles



Call to Action



Partners to ensure their progress is updated in the system



County teams to ensure there is prompt update of progress



Capacity building of officers through training, refresher trainings and OJTs



Establishing and operationalize the County WASH hubs



<http://wash.health.go.ke/clts/index.jsp>

<https://www.health.go.ke/home>

followed by clicking the CLTS KENYA icon.

Key Learning & Takeaways

In 2020, A user feedback survey was conducted across the Country.

- 94 people responded

Gaps

- Counties processing data without the requisite forms.
- Lack of access to the internet and forgetting passwords main challenges.

Critical Blockers and Resolutions

Functionalities

Capacity building of more staff including refresher

Improving IT access and existing functions of the website.

Adding more features

Monitoring indicators:

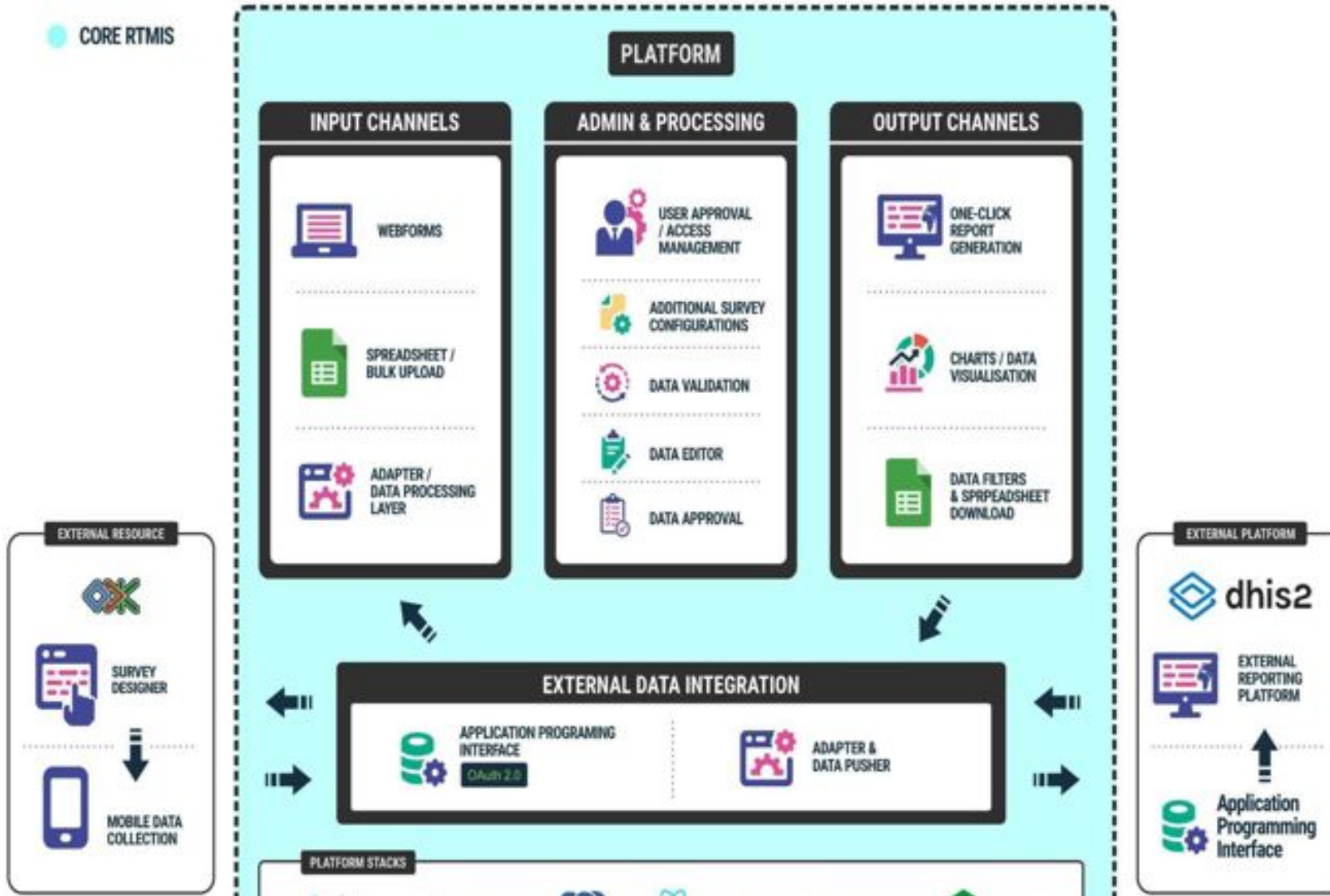
Basic Sanitation (SDG 6.2)

Handwashing

Sustainability-post ODF activities

#/trends of water/sanitation disease trends

CORE RTMIS

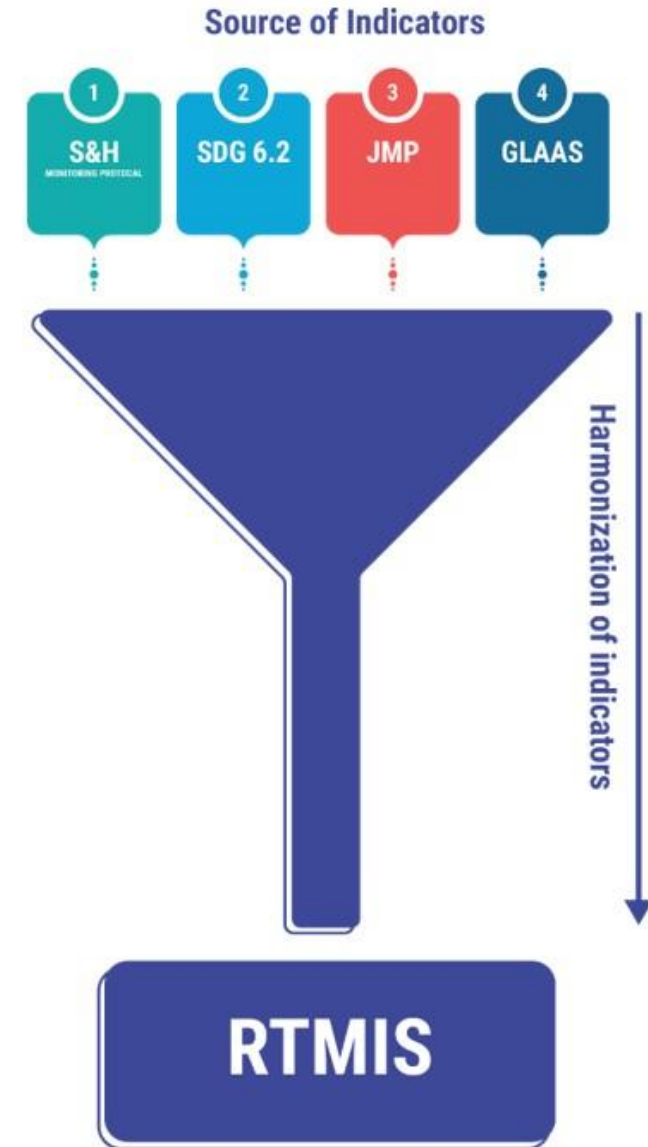


RUSH RTMIS OVERVIEW

- RUSH is a comprehensive National Sanitation and Hygiene Real-Time Monitoring and Information System (RTMIS) to accelerate the achievement of the SDG targets is of utmost necessity.

RUSH RTMIS OVERVIEW

- Aims to accelerate the achievement of SDG 6 by increasing the availability and integration of high-quality data for evidence-based policymaking, regulations, planning and investments at all administration levels.
- In 2020, the Ministry of Health (MOH) embarked on the development of a New Rural sanitation and Hygiene Protocol (RUSH) that aligns with the JMP (both urban and rural settings as well as institutions).
- The platform harmonizes processes and data systems to facilitate quantitative and qualitative data entry at county and national levels, data analysis, and report generation per stakeholder needs.
 - RUSH RTMIS Indicators
 - Household level-Rural and Urban (Sanitation, Hygiene (Hand and Menstrual Hygiene,)
 - WASH in Schools (Water Access, Sanitation, Hygiene, environmental cleaning.
 - WASH in HCFs (Water access, sanitation, hygiene, Healthcare waste management and environmental cleaning.
 - Governance policy and coordination (Governance, Policy, Coordination and financial.



RUSH RTMIS Roadmap



Phase 1: 2021-2022 Prototype



- System design document prepared.
- Draft of the training and user manuals.
- National and County user acceptance testing on the minimum viable product.
- Pilot testing in 3 Counties; Turkana, Kitui and Homabay.
- Minimum viable product developed.

Phase 2: 2023

RUSH RTMIS developed and

1. Development of RUSH RTMIS Roadmap

- Design workshop to develop the RUSH RTMIS roadmap.

2. Development of the RUSH RTMIS

- Improve the M&E framework and data collection tools
- Integrate the official GoK Master lists
- Develop an offline mobile browser-based data collection
- User acceptance testing, piloting and validation exercises at National and Counties

3. Handover, capacity building and maintenance

- Capacity building of the National Master trainers
- Hosting and user support including post-handover support.

U S H
Kenya Rural Urban Sanitation and Hygiene

DASHBOARDS REPORTS

Rural Urban Sanitation and Hygiene (RUSH)

Management Information System (RTMIS)
Sanitation and hygiene estimates across Kenya
Working to achieve national RUSH targets:

9 Months	23 Days	9 Hours	54 Minutes	9 Seconds
-------------	------------	------------	---------------	--------------


VIEW NATIONAL DATA


COMPREHENSIVE DASHBOARDS ▾


About RUSH

Kenya Rural Urban Sanitation and Hygiene (RUSH) platform is a real-time monitoring and information system owned by the Ministry of Health. The platform aggregates quantitative and qualitative data from county and national levels and facilitates data analysis, report generation and visualizations.

Partners

 **USAID**
FROM THE AMERICAN PEOPLE


From
the People of Japan



Call to Action



Establishing and operationalize the
County WASH hubs



Review and validating the system by
key stakeholders



Capacity building of officers through
training, refresher trainings and OJTs



<https://rtmis.akvotest.org/>



**THANK YOU.
QUESTIONS?
COMMENTS?**